

SAMPLE SIZE -----	NO. OF DEFECTS -----
61	11
72	10
64	12
51	5
69	10
61	10
65	11
73	12
65	3
52	6
64	9
66	5
76	9
51	8
75	4
73	13
64	8
70	5
64	8
64	9
54	6
73	13
68	11
51	4
56	11
67	5
54	11
71	3
74	11
58	5
61	12
78	4
61	9
66	12

Directions:  
-----

1. Select a choice from the above
2. Use the "arrow" keys to move selection, then press RETURN
3. Remember that Alt-M restores menus.

56	10
67	12
78	6
51	12
77	8
54	9
75	10
61	11
60	6
63	10
69	8
79	9
62	4
52	8
60	9
73	6

-----                      -----  
SUM: 3227.27931167 421.697496893  
COUNT:                      50

	P	C/L	UCL	LCL
	-----	-----	-----	-----
e menu.	18.76	13.07	26.06	0.07
	13.92	13.07	24.99	1.15
to a	18.35	13.07	25.66	0.47
J.	9.13	13.07	27.23	-1.10
	14.01	13.07	25.28	0.85
s the	16.78	13.07	26.02	0.12
	16.51	13.07	25.58	0.55
	16.04	13.07	24.92	1.22
	5.37	13.07	25.63	0.50
	12.35	13.07	27.06	-0.93
	14.39	13.07	25.66	0.47
	6.97	13.07	25.47	0.66
	12.39	13.07	24.68	1.45
	16.20	13.07	27.26	-1.13
	5.78	13.07	24.74	1.40
	17.70	13.07	24.88	1.25
	12.00	13.07	25.73	0.40
	7.07	13.07	25.14	0.99
	12.10	13.07	25.67	0.47
	14.12	13.07	25.71	0.42
	10.79	13.07	26.81	-0.68
	17.57	13.07	24.91	1.23
	15.57	13.07	25.33	0.80
	7.08	13.07	27.24	-1.11
	19.79	13.07	26.57	-0.44
	7.74	13.07	25.40	0.74
	20.02	13.07	26.84	-0.71
	4.52	13.07	25.06	1.07
	15.00	13.07	24.83	1.30
	8.20	13.07	26.30	-0.17
	19.43	13.07	26.05	0.09
	5.59	13.07	24.54	1.59
	15.61	13.07	26.06	0.08
	18.16	13.07	25.56	0.57

17.43	13.07	26.59	-0.46
17.98	13.07	25.45	0.68
7.22	13.07	24.51	1.62
23.90	13.07	27.19	-1.05
10.57	13.07	24.57	1.57
17.38	13.07	26.86	-0.73
13.45	13.07	24.74	1.40
18.09	13.07	26.06	0.08
10.16	13.07	26.12	0.01
15.95	13.07	25.83	0.31
11.67	13.07	25.22	0.92
10.89	13.07	24.45	1.68
6.67	13.07	25.88	0.25
14.50	13.07	27.09	-0.96
14.55	13.07	26.16	-0.03
7.65	13.07	24.90	1.23
-----	-----	-----	-----

AVG: 13.07  
SQRT: 33.70

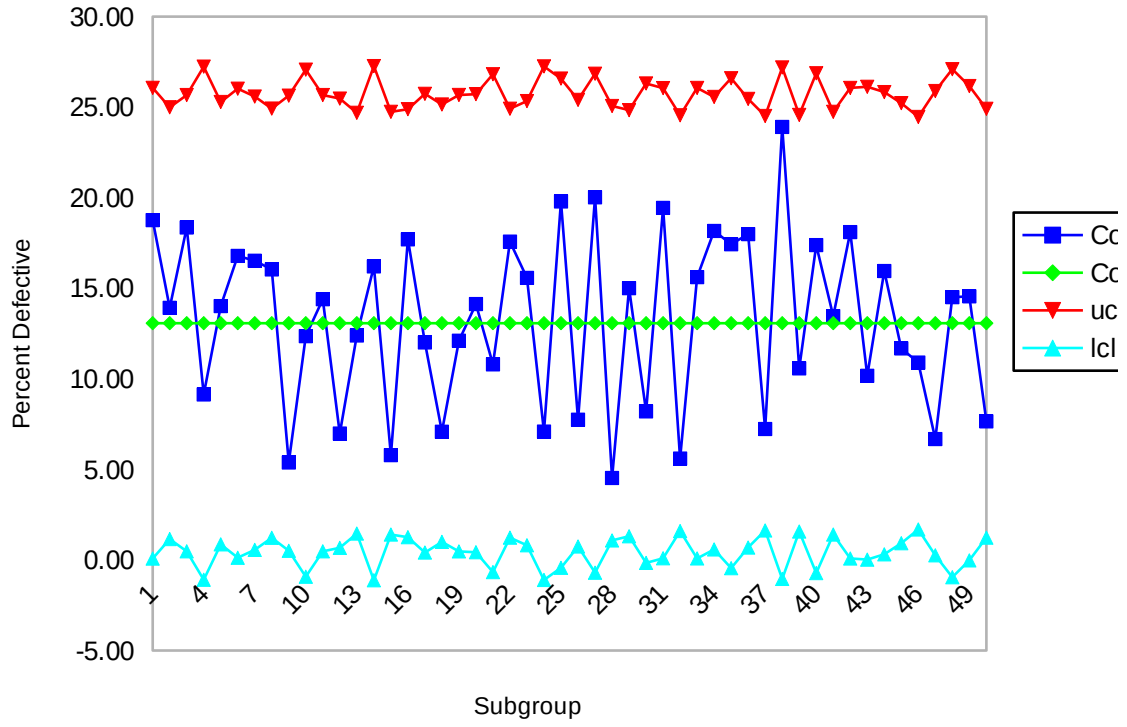
Written by Mark Horvatic  
Sept. 1983

SUBGROUP	/xmo6~	/xmp6~		
-----	View	New data	Add data	Graph
1	View Example	Erase old data	Add new data	Construct and
2	~{graph}	/reb7..c56~/rib/rib7..c56~		{graph}
3	/xgp4~	/xgp4~	/xgp4~	/xgp4~
4				1
5				
6	{goto}a1~	{goto}b7~	/xmp6~	
7				
8				
9				
10				
11				
12				
13				
14				
15				
16				
17				
18				
19				
20				
21				
22				
23				
24				
25				
26				
27				
28				
29				
30				
31				
32				
33				
34				

35  
36  
37  
38  
39  
40  
41  
42  
43  
44  
45  
46  
47  
48  
49  
50



P-Chart





Column I
Column J